

Yoga 7i 2-in-1 (16", 9)

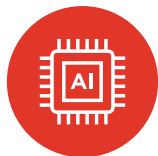
Shape your creativity.

Inspiration all around with the Lenovo Yoga 7i 2-in-1, Unlock new AI experiences, performance, and battery life with the latest Intel® Core™ Ultra processors, delivering 360° of flexibility, and ultra-immersive audio-visuals on the 16" display. With a digital pen and a fast-charging battery, it's your art studio, home office, and cinema all in one.



Unlock new AI experiences

Unlock AI accelerated experiences with the latest Intel® Core™ Ultra processors, like creating images or music from text or dramatically improving photos and videos in a few clicks. Unleash supercharged visuals With Intel® Integrated graphics for an elevated creative journey and experience longer battery life that tops up quickly with Rapid Charge.



Reads the room really well

Lenovo AI Engine+ with Copilot on Windows 11 is an ecosystem of intuitive features designed to enhance your creativity. Automate tasks, conjure up inspirations, and get tailored answers with prompts - it's your own AI-powered intelligent assistant. Look sharp on the 2MP FHD IR camera and your voice is crystal-clear with Smart Noise canceling.



Do more, charge less

Power ahead with unparalleled endurance from an all-day battery with fast charging capabilities. With up to 25 hours of video playback, it has plenty of power to let you go far and long. When you need to recharge at the end of the day, Rapid Charge technology delivers in a zap to keep you and your creativity moving.



Creativity comes full circle

With 360° versatility and a comfort edge design, you can do it all in ergonomic style. Score presentations on a display mode, zip through work on laptop mode, sketch your designs on tablet mode with the digital pen, and binge on stand mode. The quick keys on the edge-to-edge keyboard lets you access your fave applications and folders effortlessly.



Get the fuller picture

Sights and sound unite on the expansive 16" WUXGA display, delivering Dolby Vision® immersion and a 10-point multitouch glass panel. Boasting a taller 16:10 screen and sporting up to 91% active area ratio, see your masterpiece in its full glory. Listen to room-filling sound amplified on two symmetrical speakers enhanced by Dolby Atmos®.



Yoga 7i 2-in-1 (16", 9)

SPECIFICATIONS

Yoga 7 2-in-1 16IML9*

PERFORMANCE

Processor

Intel® Core™ Ultra 7 Processor (U15)
Intel® Core™ Ultra 5 Processor (U15)

Operating System

Windows 11 Home
Windows 11 Pro

Graphics

UMA : Intel® Graphics*

Memory¹

LPDDR5X : 16 GB; 7467 MHz

Storage

PCIe SSD Gen 4 M.2 : 512 GB / 1 TB

Camera

FHD 2M + IR Hybrid | Camera Shutter |
Resolution - 2.0M | Framerate - 30fps Max

Audio

2 x 2W Speakers
Dolby Atmos® Audio

Battery² (71Whr)

WUXGA

Local Video Playback 1080p : Up to 25 Hours

MobileMark® 2025 : Up to 13 Hours

Rapid Charge Express



With Lenovo
AI Engine+

LENOVO SERVICES

Lenovo Premium Care Plus

Lenovo Premium Care Plus is the ultimate PC support experience with you as our priority 24/7. Enjoy personalized hardware and software support from a global network of elite technicians, along with accidental damage protection, fast repairs with onsite support, extended battery warranty, data migration assistance, and smart performance solutions that optimize PC performance and security.

Lenovo Smart Performance

Smart Performance Services within Lenovo Vantage will keep your system running at optimum performance and proactively fix issues that affect PC performance, internet performance, remove malware, and improve device security.

Lenovo Accidental Damage Protection

Avoid the hassles of unexpected damage & repair costs. With coverage for drops, spills, electric surges, and broken LCD screens, accidental damage protection makes it easy to repair to your PCs and ensures your device is up and running fast.

Lenovo Sealed Battery Warranty

Long-lasting battery life is not just a feature but a necessity to help you stay productive and connected all day long. Protect your PC's sealed battery from degradation, enjoy hassle-free battery replacement service, and safeguard your PC from future battery failure with our Sealed Battery Warranty Service.

Lenovo Warranty Extensions (Up to 3 Years Duration)

Gain complete peace of mind by extending your base warranty to up to 3 years and minimize unexpected repair costs.

McAfee® LiveSafe™

Register McAfee® to enjoy these benefits in your FREE 30-day trial.

- Award-winning Antivirus
- Multi-device Compatibility
- Password Manager
- Identity Theft Protection
- Safe Web Browsing
- Free Customer Support

WWW.LENOVO.COM

Lenovo reserves the right to alter product offerings and specifications at any time, without notice. Lenovo makes every effort to ensure accuracy of all information but is not liable or responsible for any editorial, photographic or typographic errors. All images are for illustration purposes only. For full Lenovo product, service and warranty specifications visit www.lenovo.com. Lenovo makes no representations or warranties regarding third party products or services. **Trademarks:** The following are trademarks or registered trademarks of Lenovo: Lenovo, the Lenovo logo, ideapad, IdeaCentre, yoga and yoga home. Microsoft, Windows and Vista are registered trademarks of Microsoft Corporation. Intel, the Intel logo, Intel Inside, Intel Core, and Core Inside are trademarks of Intel Corporation in the U.S. and/or other countries. Other company, product and service names may be trademarks or service marks of others. Visit www.lenovo.com/lenovo/us/en/safecomp/ periodically for the latest information on safe and effective computing. ©2024 Lenovo. All rights reserved.

DESIGN

Display

16" WUXGA (1920 x 1200) LCD,
60 Hz, 16:10, 300 nits, 45% NTSC,
10-point Multitouch Glass

4-Side Narrow Bezel (91% AAR)

Left/Right : 3.05 mm

Top : 5.45 mm

Bottom : 10.01 mm

Dimensions (W x D x H)³

(mm) : 361.79 x 249.95 x as thin as 16.99

(inches) : 14.24" x 9.84" x as thin as 0.67"

Weight

Starting at 1.99 kg (4.39 lbs)

Hinge

360°

Color

Storm Grey

¹ Other options available.

² All battery life claims are approximate and based on two methods of testing: MobileMark® 2025 battery life benchmark @ 200 nits brightness and continuous 1080p video playback @ 150 nits brightness on the latest update of Windows 10. Actual battery life will vary and depends on many factors such as product configuration and usage, software use, wireless functionality, power management settings, and screen brightness. The maximum capacity of the battery will decrease with time and use.

³ Height is calculated using T2 measurements and should be considered 'as thin as'.

⁴ The actual transfer speed of the USB 3.2 will vary and, depending on many factors, such as the processing capability of host and peripheral devices, file attributes and other factors related to system configuration and your operating environments, may be slower than a speed of 20 Gbit/s.

⁵ Available OTA.

⁶ EPEAT®-registered where applicable — see www.epeat.net for registration status by country.

CONNECTIVITY

WLAN

2x2 Intel® WiFi 6E (802.11 ax)

Bluetooth®

Bluetooth® 5.3

Input/Output (I/O) Ports

Left Side

1 x HDMI 2.1 TMDS

2 x USB-C (Thunderbolt™ 4 /
USB 3.2 Gen 2⁴ / DP 2.1 / PD 3.1)

1 x Headphone/Microphone Combo Jack (3.5 mm)

Right Side

1 x USB 3.2 Gen⁴ (Always-On)

1 x USB 3.2 Gen 1⁴

1 x MicroSD Card Reader

1 x Power Button

PRELOADED SOFTWARE

- Windows 11 Home/Pro
- Lenovo Vantage
- Microsoft 365 Trial
- McAfee® LiveSafe™
- Dolby® Access (Dolby Vision® and Atmos®)
- Smart Note⁵

NOTEABLE MENTIONS

- MIL-STD-810H
- EPEAT™ Gold⁶
- ENERGY STAR® 8.0
- Fingerprint Reader

IN-BOX

- Lenovo Digital Pen (Base Pen 3.0)
- USB-C Adapter

OPTIONS & ACCESSORIES



Lenovo Yoga
Pro Mouse

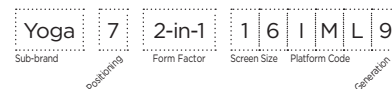


Lenovo Yoga
True Wireless
Stereo Earbuds



Lenovo Yoga
Sleeve
(14.5" and 16")

* Example of Lenovo
catalogue naming
convention



Intel® platform codes

Gemini Lake: *IGM*, Whiskey Lake: *IWL*, Ice Lake: *ILL*, Gemini Lake: *IGL*, Comet Lake: *IML*, Tiger Lake: *ITL*, Alder Lake: *IAP*, Alder Lake-HX: *IAX*, Alder Lake-U15: *IAU*, Alder Lake-P28: *IAP*, Alder Lake-P28/U15: *IAL*, Alder Lake-H45: *IAH*, Alder Lake N: *IAN*, Raptor Lake-PX: *IRP*, Raptor Lake-H: *IRH*, Raptor Lake-HX: *IRX*, Alder Lake-M U9: *IAM*, Raptor Lake U: *IRU*, Meteor Lake-P: *IMP*, Meteor Lake-H: *IMH*, Raptor Lake-P: *IRP*, Raptor Lake-P28/U15: *IRL*, Raptor Lake-B: *IRB*, Raptor Lake-B: *IRZ*.



Lenovo